

Geotechnical & Foundation Contractor



REFERENZA TECNICA - TECHNICAL REFERENCE



# World Trade Center

New York City, NY

**TREVII**Group



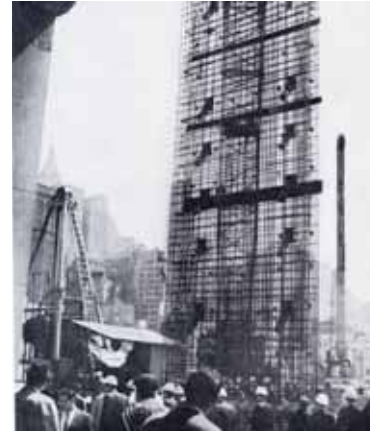
## The history

The original World Trade Center was built within the west bathtub Slurry Wall which was completed in 1967 by ICOS Corporation.

## The present

### TREVIICOS INVOLVEMENT

TREVIICOS Corporation, in JV with Kiewit Constructors,



successfully completed the construction of the structural Slurry Wall for the World Trade Center East Bathtub. The project is a part of the \$1 billion World Trade Center Transportation Hub Project in New York City, featuring the work of world renowned architect Santiago Calatrava. The 85,000 sqft of Slurry Wall were divided in two main areas at the South and North side of the temporary PATH station. Upon completion, the Slurry Wall will act as the retaining wall and foundation for the new transportation hub as well as the foundation of three of the new towers that will rise at Ground Zero.







## TECHNICAL CHALLENGES

The challenges posed by the difficult site conditions, the congested site and the aggressive schedule were overcome using state-of-the-art equipment.

One hydromill equipment and two digging cranes equipped with clamshells were used for the excavation of the fifty-three Slurry Wall panels through clay, glacial till and 18,000 psi rock, down to a depth exceeding 110 ft.



## TECHNOLOGICAL KNOW-HOW

Thanks to the support of the TREVIGROUP, the Joint Venture was able to overcome the existing site conditions, which ranked among the most challenging in the foundation industry. The extensive knowledge and expertise gained by the TREVI GROUP as Foundation Contractor and Equipment Manufacturer in its first 50 years was put to work in the customization of the Slurry Wall excavation equipment to the extreme conditions encountered at the World Trade Center site.





## Personnel expertise

A very complex project to be performed in front of a worldwide audience on an extremely demanding schedule could only be undertaken by the most qualified personnel.

The Joint Venture committed the most qualified personnel to the Project. These individuals with their competence, tenacity and commitment ultimately made this unique Project a reality.



*Headquarters:*

38 Third Avenue, 3rd Floor  
Boston National Historic Park  
**Charlestown, MA 02129**  
Phone 617-241-4800 - Fax 617-241-4801  
info@trevicos.com - [www.trevigroup.com](http://www.trevigroup.com)

[www.trevigroup.com](http://www.trevigroup.com)